



A fully integrated suite of global business software solutions for global Time and Labor Management needs



EBS Time

EBSTime Suite

- EBSTime (Small Business, Professional and Enterprise)
- EBSScheduler
- EBSAttendance

EBSAlerts

- Operational Business Intelligence
- Business Activity Monitoring
- e-Mail Processing and Workflow

Time Collection

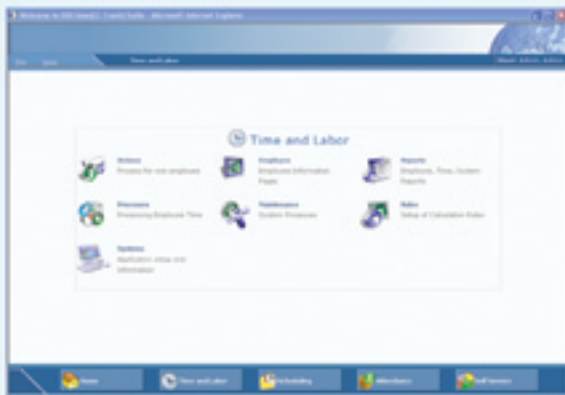
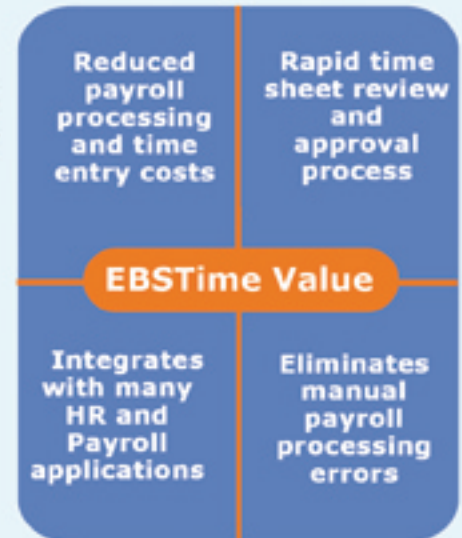
- EBSTimeSheet
- EBSPunch
- EBSTelePunch
- Digital Time Clocks
- Hand Biometric Time Clocks
- Iris Biometric Time Clocks
- EBSiApps

Since 1992, **EBS** has been a world recognized software development industry leader with a proven track record of award winning enterprise-wide mission critical software products that consistently exceed client expectations. EBSTime is a fully integrated suite of global business software applications that encompass Time & Labor Management, Attendance, Scheduling, Business Operational Intelligence, Business Activity Monitoring and e-Mail Processing with Workflow. Engineered from a 'grass roots' perspective, the EBSTime suite of solutions implements 'real time' data centralization, integration, access and dissemination via LAN, WAN, ASP Hosting, SaaS, Internet, cellular telephones, iPhone, iPad and iPod devices. Our customer centric focus ensures innovative and scalable solutions that incorporate emerging technology features and functionalities to assure maximum benefit and 'Return on Investment'.

EBSTime Advantages and Benefits

All EBS products are web-based n-tier software applications developed utilizing the latest Microsoft .NET, SQL Server and Silverlight technologies and are meticulously engineered to provide global business software solutions that:

- ✉ excel within today's demanding global web based and mobile wireless business environments
- ✉ utilize existing client internal hardware and software infrastructures
- ✉ allow for rapid implementation and complex client specific customization
- ✉ provide for seamless Front and Back Office software integration
- ✉ ensure swift scalability and effortless administrative maintenance
- ✉ address vital feature and functionality needs mission critical to day to day business operations
- ✉ incorporate advanced business processes to ensure effective business procedures and practices
- ✉ provide a wide selection of vital reports for effortless data retrieval, filtering and 'drill down' capabilities
- ✉ focus on proven technology concepts with track records that assure maximum benefit and ROI



- ✉ implement the strategic framework needed to support successful business software integration
- ✉ assure clients are "always connected" with real time access to mission critical corporate data
- ✉ construct and maintain vital inter-departmental communications for precise knowledge transfer
- ✉ expand the efficiency and effectiveness of client enterprise-wide business solutions
- ✉ provide the information that keeps clients at the forefront of their industry and business markets
- ✉ seamlessly integrate with Sage Abra HRMS, Sage MAS 90/200/500, Sage Accpac, Sage Timberline Office, PDS Vista HRMS, Mangrove Software, Microsoft Solomon, ADP and many other ERP, HR and Payroll applications.

"Employee Based Systems was the only company we found that was flexible and responsive enough to provide the customizations we needed. They provided some challenging rule configuration changes in a very timely manner"

- **Boyd Evans, Controller**
Idaho Technology Inc.

EBSScheduler

EBSScheduler is an easy to use application for creating individual and group schedules. EBSScheduler can effectively assist to:

- ☑ reduce labor costs through overtime control and management
- ☑ easily ensure compliance with regulations, policies and labor agreements
- ☑ minimize employee grievances through scheduling policy enforcement
- ☑ increase productivity through effective deployment of multi-skilled employees
- ☑ insure appropriate employee scheduling at all times

Allows for creation of individual, group or shift schedules

EBSScheduler Value

Enables efficient enforcement of company attendance policies

Employee Based Systems was the one vendor who was able to meet all of the technical and accounting requirements that we had.

**- Val Coles, Controller
Kencoil**

Enables creation of attendance plans for vacation, illness, FMLA and many other plans

EBSAttendance Value

Automatically calculates accruals and posts leave balances

"We looked at several of the big outsourced payroll companies as well as some Web based in-house systems. We found that Employee Based Systems had the best integration with Sage Abra"

**- Steve Palmer, CIO,
McCorkle Nurseries Inc.**

EBSAttendance

EBSAttendance effectively enables the creation of unlimited scheduled and/or unscheduled employee attendance plans including vacation, jury duty, illness, bereavement, personal leave, etc. EBSAttendance automatically calculates accruals and posts leave balances according to the assigned attendance plan.

- ☑ Perform date sensitive accounting for each attendance plan for fiscal, calendar and anniversary accrual years
- ☑ Provide a year-to-date snapshot of employee attendance for viewing by supervisors and employees
- ☑ Carryover unused time to the next accrual year while tracking maximum carryover hours

EBS provides numerous options for entering time, including physical Digital and Biometric Time Clocks, web based time clock and time sheet software applications, Voice Response Units and telephony technology including cellular telephones, iPhone, iPad, iPod and PDA devices.

Digital Time Clocks

The EBS AccuTime Series offers a variety of cost effective time collection devices with readers for magnetic swipe, proximity or bar coded badges which support Ethernet communications and are ideal for workforce management, employee time and attendance, access control and job tracking.



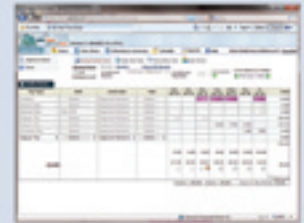
Biometric Time Clocks

EBS Schlage/Ingersoll Rand Biometric Time Clocks employ the latest biometric technologies which identify employees by unique hand geometries as opposed to finger or hand prints. This technology guarantees accuracy of identification up to 99.9%, virtually eliminating 'buddy punching' fraud. These clocks are Ethernet enabled and allow for connection anywhere in the network.



EBSTimeSheet

EBSTimeSheet is used primarily for professional employees, salaried employees and employees working at remote locations. The data is automatically transmitted 'real time' from the remote location to the main EBSTime database.



EBSPunch

EBSPunch is a web based module that provides an easy to use web interface for logging time, entering job transfers, viewing employee time records and accessing time information from EBSAttendance and EBSScheduler modules.



EBSTelePunch

EBSTelePunch allows time and attendance information to be entered via telephone using simple voice commands or keypad response. The EBSTelePunch system translates the voice commands and transmits this information directly to EBSTime where it is recorded on the employee electronic time sheet. This application is extremely useful for companies with employees in the field with no access to a company LAN or WAN.



Iris Biometric Time Clocks



IrisAccess offers the increased application versatility and flexibility that makes enrollment and recognition easier than ever. Intuitive visual user interface enables users to quickly position themselves for enrollment or recognition as images of both eyes are captured virtually simultaneously.

EBSiApps



The EBSiApps is the most recent addition to the EBSTime Suite and opens up Time and Labor Management features and functionality to Apple iPhone, iPad and iPod users.

For more information, contact our Sales Department at:

Employee Based Systems

Employee Based Systems LLC

Phone: (303) 991 3500 Fax: (303) 991 3501

Website: www.getebs.com, E-mail: sales@getebs.com